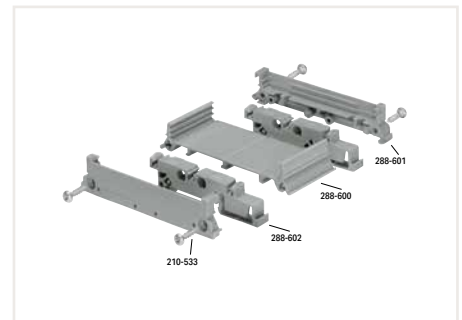
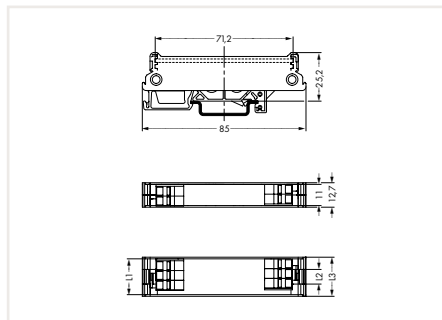


DIN-Rail Mount PCB Carriers

288 Series



Mounting carrier (size 1)

Length calculation for a complete mounting carrier:

PCB length: L1

Base length: $L2 = L1 - 11 \text{ mm}$

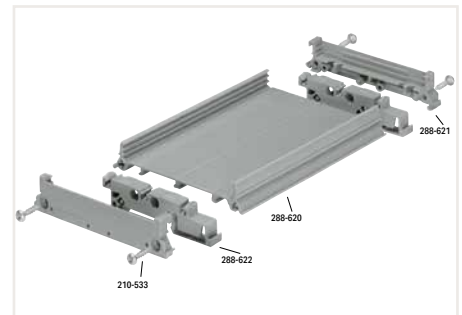
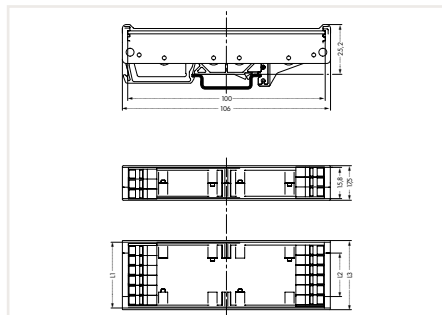
Mounting carrier length: $L_3 = L_1 + 2 \text{ mm}$

Lateral cover (size 1): 6.35 mm thick

Free space between base and PCB (when using upper PCB groove): 5 mm

PCB tolerances: 1.5 mm \pm 0.2 mm (thickness), \pm 0.2 mm (length/width); -0.1/+0.3 for milling contours

Mounting carrier; size 1		
Description	Item No.	PU
Lateral cover; size 1; small; 6.35 mm thick	288-601	1
Mounting foot for DIN-35 rail	288-602	1
Carrier base; size 1; 1 m long	288-600	1



Mounting carrier (size 2)

Length calculation for a complete mounting carrier:

PCB length: L1

Base length: $L2 = L1 - 15.8 \text{ mm}$

Mounting carrier length: $L3 = L1 + 2 \text{ mm}$

Cover length: $L_4 = L_1$

Lateral cover (size 2): 8.75 mm thick

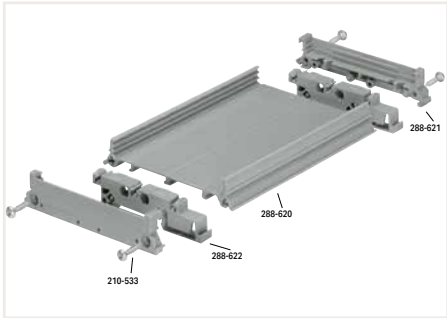
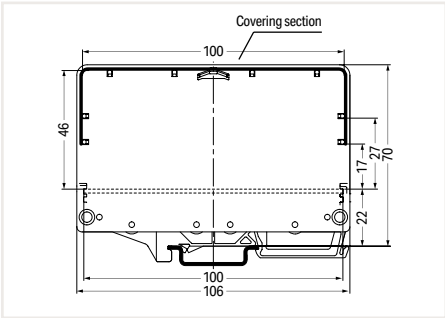
Free space between base and PCB (when using upper PCB groove): 5 mm

PCB tolerances: 1.5 mm \pm 0.2 mm (thickness); \pm 0.2 mm (length/width); -0.1/+0.3 for milling contours

Mounting carrier; size 2		
Description	Item No.	PU
Lateral cover; size 2; small; 8.75 mm thick	288-621	1
Mounting foot for DIN-35 rail	288-622	1
Carrier base; size 2; 1 m long	288-620	1

DIN-Rail Mount PCB Carriers

288 Series



Mounting carrier (size 2)

Length calculation for a complete mounting carrier:

- PCB length: L1
- Base length: L2 = L1 - 15.8 mm
- Mounting carrier length: L3 = L1 + 2 mm
- Cover length: L4 = L1
- Lateral cover (size 2): 8.75 mm thick
- Free space between base and PCB (when using upper PCB groove): 5 mm
- PCB tolerances: 1.5 mm ± 0.2 mm (thickness); ± 0.2 mm (length/width); -0.1/+0.3 for milling contours

Mounting carrier; size 2; with cover		
Description	Item No.	PU
Lateral cover; size 2; large; 8.75 mm thick	288-626	1
Cover; size 2; 1 m long	288-627	1

Accessories; for all products on this page

Marking strips

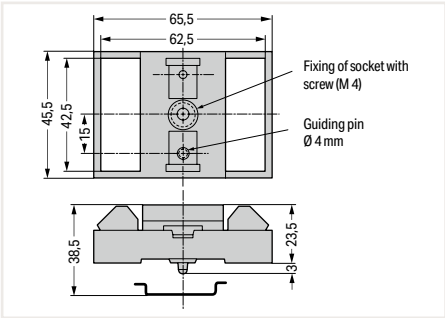
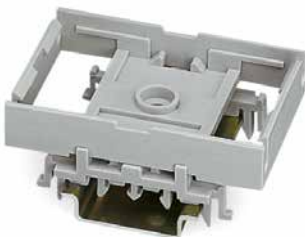


Description	Item No.	PU
Phillips screw 2.9 x 13*	210-533	25
Marking strip 7.5 x 0.5 mm; 1 m long; translucent	709-196	1

* Two pieces per lateral cover; for a module length of 35 mm or higher; lateral covers must be riveted for smaller modules. Rivet length depends on module length (rivets are not offered by WAGO).

DIN-Rail-Mount PCB Carriers and Feet

Series 288



Mounting carrier			
Description		Item No.	PU
Mounting carrier	For screw mounting or DIN-rail mounting via universal snap-on type mounting feet (to be ordered separately)	288-001	1
Universal mounting foot	Snap-on type; for DIN-15, DIN-32 and DIN-35 rails	288-002	10
Mounting carrier for PCBs	Suitable for a "Eurocard" PCB (100 x 160 mm)	288-003	1